






The CRAFFT pathway for wrist fractures in children

Does a child need surgery?

-  Wrist fracture?
-  Aged 10 years or under?
-  Displaced ?
-  Within the distal segment?
-  Neurovascularly intact?



The distal segment is defined using the AO square - an imaginary square whose side length equals the maximum combined width of the distal radial and ulnar growth plates.

The answer:
Cast first. Operate exceptionally.

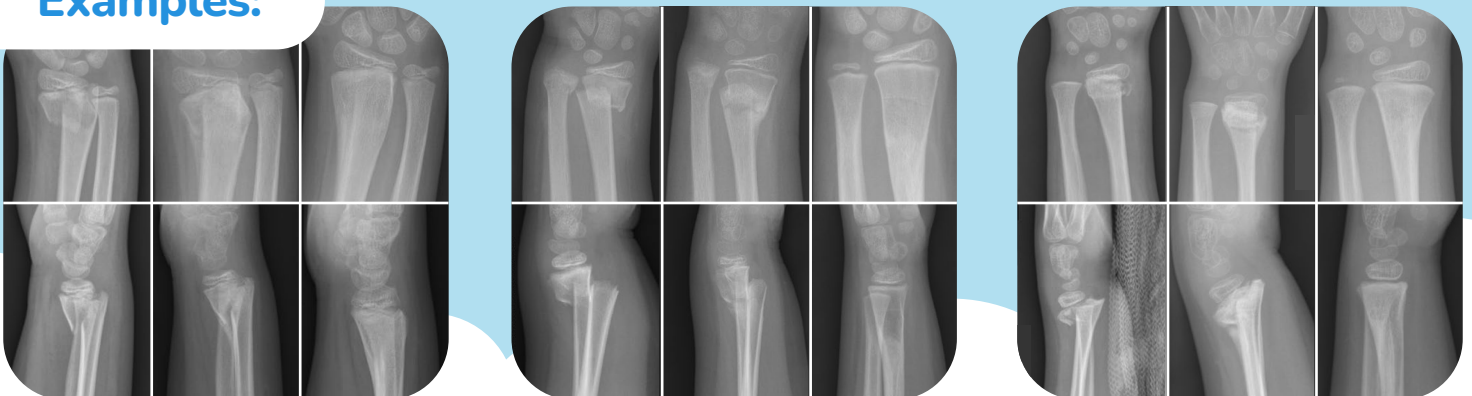


The evidence:

No meaningful difference in function. A modest difference in cosmesis that improved with time. Surgery added cost and procedural complications.



Examples:



Be CRAFFTY – Cast First

Read the evidence at www.CRAFFTstudy.org · Published in The Lancet

